



LD型电动单梁起重机

LD Model Motor-driven Single Beam Crane

简介 A Brief Introduction

LD型电动单梁起重机具有结构合理, 整机刚性强的特点。整机与CD₁型、MD₁、HC型电动葫芦配套使用, 是一种轻小型的起重机械。其起重量为1t-30t。跨度为7.5-31.5m, 工作级别为A3-A5, 工作环境温度-25~40℃。

本产品广泛用于工厂、仓库、料场等不同场合吊运货物, 禁止在易燃、易爆腐蚀性介质环境中使用。

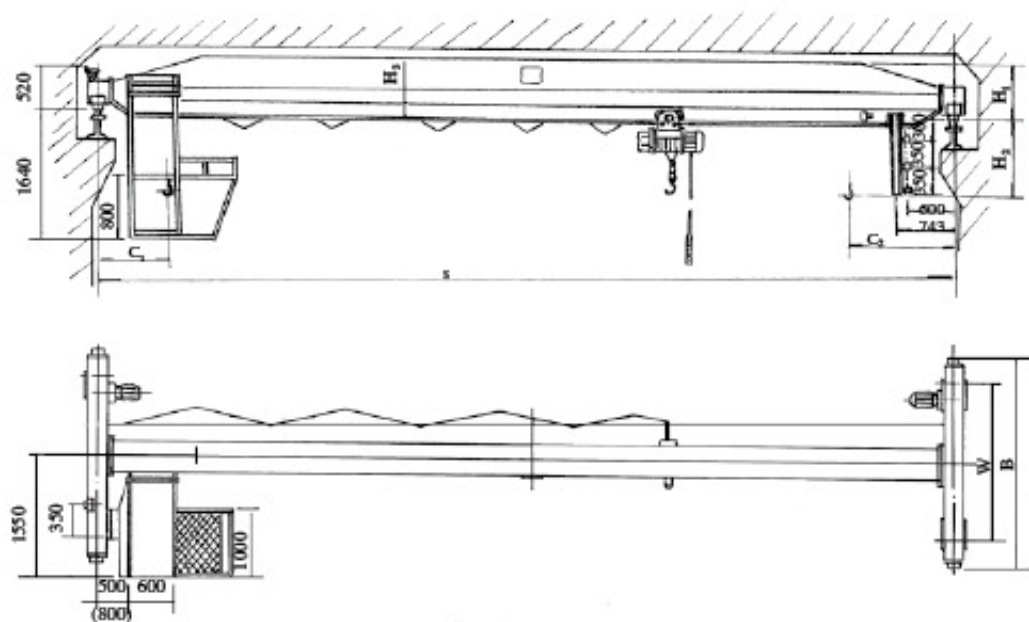
本产品设有地面和操纵室两种操作形式。操纵室有开式、闭式两种, 可根据实际情况分为左或右面安装两种形式, 入门方向有侧面及端面两种, 以满足用户在各种不同需要的情况下进行选择。

LD model single beam motor crane is improved and designed on the basis of LD model. It is characterized by more reasonable structure and higher strength steel as a whole. Used together with CD₁ model, MD₁, HC model electric hoist as a complete set, it is light duty crane with a capacity of 1 to 30 tons. The span is 7.5-31.5m. Working grade is A3-A5. Working temperature is -25℃ to 40℃.

This product is widely used in plants, warehouses, material stocks to lift goods. It is prohibited to use the equipment in the combustible, explosive or corrosives environment.

This product has two operational methods, ground or operational room which has open model and closed model and can be installed on left or right side according to the practical situation. And the direction of entering the gate has two forms, sideway and ends in order to satisfy the users' choice under different conditions.

简图 Sketch



注: 所供参数仅供参考, 如有更改恕不通知, 具体型号参数以本公司实际产品设计为准。

河南重工起重机集团有限公司
HENAN ZHONGGONG CRANE GROUP CO.,LTD.



LD型电动单梁起重机

LD Model Motor-driven Single Beam Crane

技术参数 Main Technical Data

起重机 运行机构 crane travelling mechanism	运行速度m/min working speed	(地)室 20 ground	(地)室30 ground	(室) 45 room ground	(室) 60 room ground	(室) 75 room ground
	速比 speed ratio	58.78	39.38	26.36	19.37	15.88
	电动机 motor	型号 type	锥形鼠笼 cone squirrel-cage			锥形绕线 cone winding thread
功率 power kw		ZDY ² 1-4 2×0.8			ZDR 100-4 2×1.5	
转速r/min rotational speed		1380				
起升机构 (电动葫芦) 及电动葫芦 运行机构 lifting mechanism (electric hoist)& electric hoist travelling mechanism	电动葫芦型式 model of electric hoist	MD ₁ 型 model	HC型 model	CD ₁ 型 model		
	起升速度(m/min) lifting speed	8/0.8 (7/0.7)	3.5(3.5/0.35)	8 (7)		
	起升高度H(m) lifting height	6, 9, 12, 18, 24, 30				
	运行速度(m/min) travelling speed	20, 30				
电动机 motor	锥形鼠笼型 cone squirrel-cage model					
工 作 级 别 working system	中级 intermediate					
电 源 electric current	380V 50Hz three-phase					
车 轮 直 径 wheel diameter	Ø270					
轨 道 面 宽 width of rail	37~70					

起重量 Capacity t	跨 度 span m	起重机总重 (t) Crane total weight	最大轮压 (t) Max. wheel pressure	最小轮压 (t) Min. wheel pressure	基 本 尺 寸 Basic Dimensions						
					H ₁	H ₂	H ₃	B	C ₁	C ₂	W
1	7.5	2.05	1.38	0.40	490	810	550	2500	796	1274	2000
	8	2.09	1.39	0.41							
	8.5	2.14	1.40	0.42							
	9	2.19	1.42	0.44							
	9.5	2.23	1.43	0.45							
	10	2.28	1.44	0.46							
	10.5	2.32	1.45	0.47							
	11	2.37	1.46	0.48							
	11.5	2.40	1.47	0.49							
	12	2.46	1.48	0.50							
	12.5	2.55	1.51	0.53							
	13	2.60	1.53	0.55							
	13.5	2.64	1.54	0.56							
	14	2.69	1.55	0.57							
	14.5	2.82	1.58	0.60							
	15	2.87	1.60	0.62	530	860	595	3000	796	1274	2500
	15.5	2.92	1.61	0.63							
	16	2.97	1.62	0.64							
	16.5	3.02	1.63	0.65							
	17	3.07	1.65	0.67							
	17.5	3.14	1.67	0.69							
	18	3.21	1.69	0.71							
	18.5	3.28	1.71	0.73							
	19	3.36	1.73	0.75							
	19.5	3.40	1.74	0.76							
	20	3.48	1.76	0.78	580	870	650	3500	796	1274	3000
	20.5	3.55	1.78	0.80							
	21	3.63	1.80	0.82							
	21.5	3.71	1.82	0.84							
	22	3.80	1.84	0.86							
	22.5	3.81	1.84	0.86							
23	4.22/4.72	1.65/1.95	0.98/1.18								
23.5	4.28/5.78	1.68/1.98	1.00/1.20								
24	4.34/4.84	1.71/2.01	1.02/1.22								
24.5	4.41/4.91	1.74/2.14	1.04/1.24								
25	4.47/4.97	1.77/2.17	1.06/1.26								
25.5	4.85/5.32	1.80/2.10	1.15/1.20	885	700	900	4000	1274	796	3500	
26	4.91/5.42	1.83/2.14	1.17/1.22								
26.5	4.97/5.48	1.86/2.17	1.19/1.24								
27	5.15/5.65	1.89/2.20	1.21/1.26								
27.5	5.75/6.25	1.92/2.23	1.23/1.28								
28	5.81/6.32	1.95/2.26	1.25/1.30								
28.5	7.11/7.56	2.31/2.61	1.50/1.65								
29	7.12/7.62	2.34/2.64	1.55/1.70								
29.5	7.23/7.72	2.37/2.67	1.60/1.75								
30	7.32/7.80	2.40/2.70	1.65/1.80								
30.5	7.43/7.91	2.43/2.73	1.70/1.85								
31	7.52/8.03	2.46/2.46	1.75/1.90								

河南重工起重机集团有限公司
HENAN ZHONGGONG CRANE GROUP CO.,LTD.



LD型电动单梁起重机

LD Model Motor-driven Single Beam Crane

LD型电动单梁起重机

LD Model Motor-driven Single Beam Crane



起重量 Capacity	跨度 Span	起重机总重 Crane total weight	最大轮压 Max. wheel pressure	最小轮压 Min. wheel pressure	基本尺寸 Basic Dimensions						
					H ₁	H ₂	H ₃	B	C ₁	C ₂	W
2	7.5	2.18	1.94	0.40	490	1000	550	2500	1292.5	871.5	2000
	8	2.22	1.95	0.41							
	8.5	2.26	1.96	0.42							
	9	2.32	1.98	0.44							
	9.5	2.36	1.99	0.45							
	10	2.40	2.00	0.46							
	10.5	2.45	2.01	0.47							
	11	2.50	2.02	0.48							
	11.5	2.61	2.05	0.51							
	12	2.66	2.06	0.52							
	12.5	2.75	2.09	0.55							
	13	2.80	2.11	0.57							
	13.5	2.85	2.12	0.58							
	14	2.90	2.13	0.59							
	14.5	3.03	2.17	0.63							
	15	3.09	2.18	0.64							
	15.5	3.14	2.19	0.65							
	16	3.20	2.21	0.67							
	16.5	3.25	2.22	0.68							
	17	3.31	2.23	0.69							
	19.5	4.25	2.48	0.94	660	1080	800	3500	871.5	1291	2500
	22.5	5.07	2.68	1.14	830	1120	900				
	23	4.88/5.30	2.23/2.34	1.10/1.21	1050	800	1000	3500	1292.5	871.5	3000
	23.5	4.86/5.36	2.25/2.36	1.12/1.23							
	24	4.94/5.66	2.27/2.38	1.14/1.25							
	24.5	5.24/5.96	2.29/2.40	1.16/1.27							
	25	5.54/6.26	2.30/2.43	1.18/1.29							
	25.5	5.84/5.92	2.35/2.47	2.25/2.40	1060	900	1100	4000	1292.5	871.5	3500
	26	6.14/6.22	2.38/2.51	2.31/2.46							
	26.5	6.44/6.08	2.42/2.55	2.37/2.52							
	27	6.74/6.38	2.46/2.59	2.43/2.58							
27.5	7.04/7.68	2.50/2.63	2.49/2.64								
28	7.34/7.98	2.53/2.67	2.55/2.69								
28.5	7.54/8.18	2.70/2.85	1.60/1.75								
29	7.74/8.38	2.75/2.90	1.65/1.80								
29.5	7.94/8.58	2.80/2.95	1.70/1.85								
30	8.14/8.78	2.85/3.00	1.75/1.90								
30.5	8.34/9.08	2.90/3.05	1.80/1.95								
31	8.64/9.28	2.95/3.10	1.85/2.00								
3	7.5	2.28	2.45	0.41	530	650	2500	818.5	1291	2000	
	8	2.33	2.46	0.42							
	8.5	2.38	2.48	0.44							
	9	2.43	2.49	0.45							
	9.5	2.48	2.56	0.46							
	10	2.53	2.52	0.48							
	10.5	2.58	2.53	0.49							
	11	2.64	2.54	0.50							
	11.5	2.72	2.50	0.52							
	12	2.78	2.58	0.54							
	12.5	2.87	2.61	0.57							
	13	2.93	2.62	0.58							
	13.5	2.99	2.64	0.60							
	14	3.04	2.65	0.61							
	14.5	3.57	2.78	0.74							
	15	3.65	2.80	0.76							
	15.5	3.71	2.82	0.78							
	16	3.78	2.84	0.80							
	16.5	3.85	2.85	0.81							
	17	3.93	2.87	0.83							
	19.5	4.68	3.10	1.06	830	1185	900	3500	818.5	1291	2500
	22.5	5.23	3.24	1.20	890	1210	1000				
	23	6.4/6.85	3.05/3.20	1.35/1.45	1285	800	1100	3500	1291	818.5	3000
	23.5	6.52/7.02	3.07/3.22	1.40/1.50							
	24	6.62/7.13	3.09/3.24	1.45/1.55							
	24.5	6.73/7.24	3.11/3.26	1.50/1.60							
	25	6.84/7.41	3.13/3.28	1.55/1.65							
	25.5	7.02/7.52	3.30/3.45	1.65/1.85	1285	900	1200	4000	1291	818.5	3500
	26	7.12/7.63	3.33/3.48	1.69/1.89							
	26.5	7.34/7.82	3.36/3.51	1.73/1.93							
	27	7.43/7.91	3.39/3.54	1.77/1.97							
27.5	7.50/8.03	3.42/3.57	1.81/2.01								
28	7.63/8.12	3.45/3.60	1.85/2.05								
28.5	8.30/8.85	3.65/3.80	1.95/2.15								
29	8.43/8.95	3.68/3.83	1.99/2.19								
29.5	8.56/9.13	3.71/3.86	2.04/2.24								
30	8.73/9.35	3.74/3.89	2.08/2.28								
30.5	8.86/9.45	3.77/3.92	2.12/2.32								
31	8.98/9.60	3.80/3.95	2.15/2.35								

技术参数 Main Technical Data

技术参数 Main Technical Data

起重量 Capacity	跨度 Span	起重机总重 Crane total weight	最大轮压 Max. wheel pressure	最小轮压 Min. wheel pressure	基本尺寸 Basic Dimensions						
					H ₁	H ₂	H ₃	B	C ₁	C ₂	W
5	7.5	2.54	3.58	0.42	580	1380	720	2500	841.5	1310	2000
	8	2.60	3.59	0.43							
	8.5	2.65	3.60	0.44							
	9	2.71	3.62	0.46							
	9.5	2.77	3.63	0.47							
	10	2.82	3.65	0.49							
	10.5	2.88	3.66	0.50							
	11	2.91	3.67	0.51							
	11.5	3.35	3.78	0.62							
	12	3.42	3.80	0.64							
	12.5	3.52	3.83	0.67							
	13	3.61	3.85	0.69							
	13.5	3.67	3.87	0.71							
	14	3.74	3.89	0.73							
	14.5	4.09	3.98	0.82							
	15	4.19	4.00	0.84							
	15.5	4.27	4.02	0.86							
	16	4.34	4.04	0.88							
	16.5	4.42	4.06	0.90							
	17	4.52	4.08	0.92							
	19.5	4.97	4.23	1.07	890	1440	1010	3500	841.5	1310	2500
	22.5	6.05	4.50	1.34	950	1485	1110				
	23	6.31/6.80	4.10/4.25	1.45/1.55	1460	900	1200	3500	1274	796	3000
	23.5	6.43/6.96	4.14/4.29	1.47/1.57							
	24	6.55/7.12	4.18/4.33	1.498/1.59							
	24.5	6.67/7.20	4.22/4.37	1.51/1.61							
	25	6.79/7.25	4.25/4.40	1.53/1.63							
	25.5	7.74/8.25	4.50/4.63	1.85/1.94	1460	950	1250	3500	1274	796	3000
	26	7.88/8.32	4.58/4.66	1.88/1.97							
	26.5	8.01/8.56	4.61/4.69	1.91/2.00							
	27	8.23/8.78	4.64/4.72	1.94/2.03							
27.5	8.35/8.90	4.67/4.75	1.97/2.06								
28	8.32/8.90	4.65/4.78	2.0/2.09								
28.5	9.10/9.65	4.85/5.10	2.20/2.35								
29	9.21/9.76	4.90/5.15	2.24/2.39								
29.5	9.38/9.98	4.95/5.20	2.28/2.44								
30	9.43/10.1	5.00/5.25	2.32/2.48								
30.5	9.58/10.2	5.05/5.30	2.36/2.52								
31	9.72/10.43	5.10/5.32	2.40/2.55								
10	7.5	3.245	5.098	0.649	830	1470	900	2500	1230	1830	2000
	8	3.329	5.178	0.666							
	8.5	3.414	5.252	0.683							
	9	3.514	5.323	0.703							
	9.5	3.615	5.385	0.723							
	10	3.683	5.414	0.737							
	10.5	3.768	5.499	0.754							
	11	4.020	5.593	0.804							
	11.5	4.111	5.643	0.8222							
	12	4.202	5.692	0.84							
	12.5	4.292	5.738	0.858							
	13	4.402	5.787	0.88							
	13.5	4.493	5.830	0.899							
	14	4.584	5.872	0.917							
	14.5	4.749	6.422	0.95							
	15	4.852	6.448	0.96							
	15.5	4.956	6.504	0.97							
	16	5.092	6.568	1.0184							
	16.5	5.194	6.594	1.039							
	17	5.298	6.649	1.06							
	19.5	5.818	6.891	1.28	1010	1600	1150	3000	1230	1830	2500
	22.5	7.550	7.8	1.55	1150	1640	1200				
	23	7.90/8.30	6.9/7.1	1.6/1.8	1650	1000	1300	3500	1830	1230	3000
	23.5	7.38/7.90	6.93/7.13	1.65/1.85							
	24	7.50/8.05	6.98/7.16	1.70/1.90							
	24.5	7.62/8.12	7.02/7.18	1.75/1.95							
	25	7.75/8.30	7.05/7.20	1.8/2.0							
	25.5	8.71/9.21	7.25/7.40	2.10/2.25	1650	1050	1350	4000	1830	1230	3500
	26	8.86/9.41	7.31/7.46	2.14/2.29							
	26.5	9.01/9.51	7.37/7.52	2.18/2.33							
	27	9.16/9.71	7.43/7.58	2.22/2.37							
27.5	9.31/9.82	7.49/7.64	2.29/2.41								
28	9.46/9.96	7.55/7.70	2.30/2.45								
28.5	9.86/10.4	7.60/7.86	2.40/2.55								
29	10.7/11.2	7.66/7.91	2.47/2.62								
29.5	10.85/11.32	8.72/7.97	2.54/2.69								
30	11.01/11.52	7.78/8.03	2.61/2.76								
30.5	11.26/11.78	7.84/8.09	2.68/2.83								
31	11.41/11.92	7.90/8.15	2.75/2.90								



LD型电动单梁起重机

LD Model Motor-driven Single Beam Crane

LD型电动单梁起重机

LD Model Motor-driven Single Beam Crane



技术参数 Main Technical Data

起重机运行机构 crane travelling mechanism	运动速度m/min working speed	(地) 20 ground	(地) 30 ground	(室) 45 room ground	(室) 60 room ground	(室) 75 room ground	
	速比 speed ratio	58.78	39.38	26.36	19.37	15.88	
	电动机 motor	型号 type	ZDY ₂₂ -4	ZDY _{31S} -4 ZDR112L1-4	ZDR112L1-4		
		功率 power kw	1.5×2	2.2×2	2.1×2		
转速(r/min) rotational speed		1380					
起升机构(电动葫芦) 及电动葫芦运行机构 lifting mechanism (electric hoist)& electric hoist travelling mechanism	电动葫芦型式 model of electric hoist	MD ₁ 型MD ₂ 型					
	起升速度(m/min) lifting speed	3.5、3.5/0.35					
	起升高度H(m) lifting height	12 18 24 30					
	运动速度(m/min) travelling speed	20 30					
	电动机 motor	锥形鼠笼型Tapc squirrel-cage					
工作级别 working system	A3-A5						
电源 electric current	3相380V 50HZ three-phase						
车轮直径 wheel diameter	φ370mm						
轨道面宽 width of rail	37-70mm						

技术参数 Main Technical Data

起重量t capacity	跨度m Span	基本尺寸 Basic dimension							起重机总重t Crane total weight	最大轮压t Max wheel pressure	最小轮压t Min. wheel pressure
		H1	H2	H3	B	C1	C2	W			
16	16	924	900	1200	3000	1830	1230	2500	6.12/5.65	9.64/9.89	1.41/1.51
	16.5								6.25/5.78	9.67/9.92	1.43/1.53
	17								6.37/5.90	9.70/9.95	1.45/1.55
	17.5	1183	1050	1350	3500	1830	1230	3000	6.80/6.35	9.75/10.02	1.63/1.70
	18								6.93/6.48	9.77/10.14	1.66/1.73
	18.5								7.06/6.61	9.80/10.17	1.69/1.76
	19								7.28/6.74	9.83/10.20	1.72/1.79
	19.5								7.41/6.87	9.88/10.15	1.75/1.82
	20								7.54/7.12	10.05/11.00	1.78/1.95
	21.5	1183	1050	1400	3500	1830	1230	3000	7.67/7.26	10.08/11.03	1.80/1.97
	22								7.80/7.45	10.13/11.06	1.82/1.99
	22.5								7.93/7.80	10.14/11.09	1.83/2.01
	23								8.12/8.65	10.60/11.14	2.02/2.20
	23.5	1283	1100	1500	3500	1830	1230	3000	8.27/8.81	10.64/11.18	2.06/2.26
	24								8.42/8.93	10.68/11.22	2.10/2.30
	24.5								8.57/9.12	10.72/11.24	2.14/2.34
	25	1300	1150	1500	4000	1830	1230	3500	9.72/9.40	10.75/11.27	2.18/2.38
	25.5								9.12/9.65	11.05/11.36	2.30/2.45
	26								9.27/9.72	11.01/11.38	2.35/2.50
	26.5								9.42/9.95	11.09/11.40	2.40/2.55
27	9.57/10.1								11.11/11.42	2.45/2.60	
27.5	9.70/10.2								11.13/11.44	2.50/2.65	
28	9.85/10.15								11.15/11.46	2.55/2.70	
28.5	1400								1200	1550	4500
29		10.66/11.17	11.22/11.57	2.74/2.89							
29.5		10.81/11.32	11.24/11.59	2.79/2.93							
30		10.82/11.73	11.26/12.61	2.83/2.97							
31		10.98/11.88	11.28/11.63	2.87/3.01							
31.5	11.05/12.05	11.30/11.25	2.90/3.05								

起重量t Capacity	跨度m span	基本尺寸 Basic Dimensions							起重机总重 (t) Crane total weight	最大轮压 (t) Max. wheel pressure	最小轮压 (t) Min. wheel pressure
		H	H'	H''	B	C	C'	W			
16	7.5	924	700	1000	2500	1830	1230	2000	4.12/4.5	9.01/9.25	0.82/0.95
	8								4.26/4.66	9.12/.27	0.85/0.98
	8.5								4.366/3.38	9.14/9.29	0.88/1.01
	9								3.91/3.50	9.16/9.31	0.91/1.04
	9.5								4.02/3.62	9.18/9.33	0.94/1.07
	10								4.12/3.65	9.21/9.36	0.97/1.10
	10.5								4.23/3.75	9.23/9.38	1.00/1.03
	11								4.33/3.88	9.25/.41	1.02/1.16
	11.5								4.46/3.98	9.30/9.56	1.05/1.15
	12	4.58/4.05	9.33/9.59	1.07/1.17							
	12.5	974	800	1100	3000	1830	1230	2500	4.68/4.20	9.36/9.62	1.09/1.19
	13								4.70/4.32	9.39/9.65	1.11/1.21
	13.5								4.81/4.42	9.42/9.68	1.13/1.23
	14	4.93/4.35	9.45/9.71	1.15/1.25							
	14.5	C081	900	1200	3000	1830	1230	2500	5.75/5.30	9.55/9.80	1.35/1.45
	15								5.87/5.40	9.58/9.83	1.37/1.47
	15.5								5.99/5.51	9.61/9.86	1.38/1.40

注: 所提供参数仅供参考, 如有更改恕不通知, 具体型号参数以本公司实际产品设计为准。

河南重工起重机集团有限公司
HENAN ZHONGGONG CRANE GROUP CO.,LTD.

河南重工起重机集团有限公司
HENAN ZHONGGONG CRANE GROUP CO.,LTD.



LD型电动单梁起重机

LD Model Motor-driven Single Beam Crane

技术参数 Main Technical Data

起重机运行机构 crane travelling mechanism	运行速度m/min working speed	(地) 20 ground	(地) 30 ground	(室) 45 room ground	(室) 60 room ground	(室) 75 room ground	
	速比 speed ratio	58.78	39.38	26.36	19.37	15.88	
	电动机 motor	型号 type	ZDY122-4	ZDY131S-4 ZDR112L1-4	ZDR112L1-4		
		功率 power kw	1.5×2	2.2×2	2.2×2		
	转速(n/min) rotational speed	1380					
起升机构 (电动葫芦) 及电动葫芦 运行机构 lifting mechanism (electric hoist)& electric hoist travelling mechanism	电动葫芦型式 model of electric hoist	CD ₁ 型 MD ₁ 型 HC型					
	起升速度(n/min) lifting speed	3.5, 3.5/0.35					
	起升高度H(m) lifting height	12, 18, 24, 30					
	运行速度(n/min) travelling speed	20, 30					
	电动机 motor	锥形鼠笼型Tape squirrel-cage					
工作级别 working system	A3-A5						
电 electric current	3相380V 50HZ three-phase						
车 wheel diameter	φ370mm						
轨 width of rail	37-70mm						

起重量 Capacity t	跨 度 m span	基本尺寸 Basic Dimensions							起重量 (t) Crane total weight	最大轮压 (t) Max. wheel pressure	最小轮压 (t) Min. wheel pressure
		H	H ₁	H ₂	B	C	C ₁	W			
20	7.5	975	800	1100	2500	1830	1230	2000	3.71/3.22	10.15/11.01	0.85/1.05
	8								3.81/3.35	1.029/11.24	0.88/1.08
	8.5								3.92/3.45	10.43/11.38	0.91/1.11
	9								4.02/3.55	10.57/11.52	0.94/1.14
	9.5								4.12/3.65	10.71/11.66	0.97/1.17
	10								4.23/3.75	10.85/11.80	1.00/1.20
	10.5								4.33/3.88	10.99/11.94	1.03/1.23
	11								4.45/3.99	11.13/12.08	1.05/1.25
	11.5								4.46/3.98	11.30/12.10	1.20/1.35
	12	4.58/4.05	11.32/12.12	1.24/1.39							
	12.5	1075	800	1200	3000	1830	1230	2500	4.68/4.20	11.34/12.14	1.29/1.44
	13								4.70/4.32	11.36/12.16	1.33/1.48
	13.5								4.81/4.42	11.38/12.18	1.37/1.52
	14	1125	900	1300	3000	1830	1230	2500	4.93/4.53	11.40/12.20	1.40/1.55
	14.5								5.75/5.30	11.65/12.50	1.55/1.70
	15								5.87/5.40	11.68/12.53	1.57/1.72
	15.5								5.99/5.51	11.71/12.56	1.59/1.74

LD型电动单梁起重机

LD Model Motor-driven Single Beam Crane



技术参数 Main Technical Data

起重量 capacity t	跨度m Span	基本尺寸 Basic dimension							起重量总重 Crane total weight t	最大轮压 Max wheel pressure t	最大轮压 Max wheel pressure t
		H1	H2	H3	B	C1	C2	W			
20	16	1125	900	1300	3000	1830	1230	2500	6.85/7.36	11.74/12.59	1.61/1.76
	16.5								7.00/7.55	11.77/11.62	1.63/1.78
	17								7.15/7.78	11.80/11.65	1.65/1.80
	17.5	1175	1050	1400	3500	1830	1230	3000	7.40/7.92	12.20/13.50	1.75/1.90
	18								7.55/8.08	12.26/13.56	1.79/1.94
	18.5								7.70/8.22	12.32/13.62	1.83/1.98
	19								7.75/8.30	12.38/13.68	1.87/2.02
	19.5								7.90/8.45	13.44/14.72	1.91/2.06
	20								8.54/9.01	13.75/15.05	2.05/2.20
	21.5	1275	1050	1450	3500	1830	1230	3000	8.67/9.14	13.80/15.10	2.07/2.22
	22								8.80/9.27	13.85/15.15	2.09/2.24
	22.5								8.93/9.40	13.90/15.20	2.11/2.26
	23								9.40/9.92	14.20/15.75	2.30/2.40
	23.5								9.56/10.10	14.24/15.91	2.32/2.42
	24								9.73/0.23	14.28/15.85	2.34/2.44
	24.5	1425	1100	1550	4000	1830	1230	3500	9.89/10.40	14.32/15.89	2.36/2.46
	25								10.06/10.60	14.36/16.91	2.38/2.48
	25.5								11.5/12.02	14.95/17.20	2.65/2.90
26	1.68/12.20								14.99/17.24	2.71/2.96	
26.5	11.86/12.42								15.03/17.28	2.77/3.02	
27	12.04/12.58								15.07/17.32	2.83/3.08	
27.5	1510	1100	1600	4500	1830	1230	3500	12.22/12.78	15.11/17.36	2.89/3.14	
28								12.41/12.95	15.15/17.40	2.95/3.20	
28.5								13.20/13.75	15.70/17.90	3.05/3.40	
29								13.39/13.94	15.75/17.95	3.08/3.43	
29.5								13.58/14.10	15.80/18.00	3.11/3.46	
30								13.94/14.40	15.85/18.05	3.14/3.49	
31.5	31	1100	1600	4500	1830	1230	3500	14.12/14.62	15.90/18.10	3.17/3.52	
31								14.30/14.85	15.95/18.15	3.20/3.55	

注：所供参数仅供参考，如有更改恕不通知，具体型号参数以本公司实际产品设计为准。



LD型电动单梁起重机

LD Model Motor-driven Single Beam Crane

技术参数 Main Technical Data

起重量 (t)	跨度 (m)	基本尺寸						起重机总重 (t)	最大轮压 (t)	最小轮压 (t)
		H ₁	H ₂	H ₃	B	C ₁	C ₂			
30	7.5	2100	900	1300	2500	1830	1230	2000	5.75/5.30	3.55/3.70
	8								5.87/5.40	3.60/3.90
	8.5								6.15/5.54	3.85/3.95
	9								6.50/5.65	4.22/4.15
	9.5								7.35/5.85	4.58/4.30
	10								7.58/6.20	5.10/4.70
	10.5								7.90/6.35	5.35/4.90
	11								8.22/6.68	5.48/5.15
	11.5								8.58/6.95	5.66/5.35
	12								8.96/7.28	5.89/5.40
	12.5								9.47/8.56	3\6.3\23/5.86
	13								9.95/8.85	6.71/6.34
	13.5								10.55/9.28	7.15/6.80
	14								10.80/9.67	7.45/6.98
	14.5								11.60/9.90	7.95/7.22
	15								11.94/10.35	8.33/7.68
15.5	12.35/10.65	8.58/7.956								
16	12.84/11.05	8.75/8.28								

河南重工起重机集团有限公司
HENAN ZHONGGONG CRANE GROUP CO.,LTD.

LD型电动单梁起重机

LD Model Motor-driven Single Beam Crane



技术参数 Main Technical Data

起重量 (t)	跨度 (m)	基本尺寸						起重机总重 (t)	最大轮压 (t)	最小轮压 (t)
		H ₁	H ₂	H ₃	B	C ₁	C ₂			
30	16.5	2100	1050	1450	3500	1730	1230	3000	12.35/11.38	9.11/8.85
	17								12.88/11.70	9.45/9.18
	17.5								13.55/12.10	9.85/9.45
	18								13.96/12.45	10.31/9.80
	18.5								14.45/12.75	10.76/10.22
	19								14.83/13.12	11.13/10.65
	19.5								15.32/13.45	11.65/11.14
	20								15.77/13.76	11.97/11.52
	20.5								16.15/14.15	12.44/12.05
	21								16.40/14.50	12.73/12.43
	21.5								16.98/14.85	13.55/13.06
	22								17.40/15.23	13.81/13.42
	22.5								17.85/15.68	14.27/13.86
	23								18.30/15.90	14.71/14.26
	23.5								18.46/18.30	15.22/14.88
	24								18.90/16.65	16.58/15.26
24.5	18.45/17.10	16.96/15.65								
25	19.80/17.45	17.42/16.18								
25.5	20.30/17.75	17.93/16.44								
26										

河南重工起重机集团有限公司
HENAN ZHONGGONG CRANE GROUP CO.,LTD.